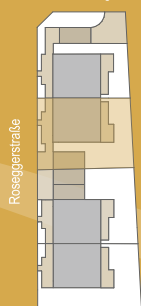


## ALLGEMEINE INFORMATIONEN

### LAGE

Weichselgasse



Zimmeranzahl 5

Wohnnutzfläche 158,63 m<sup>2</sup>  
inkl. Flächen mit Raumhöhen <1,5m

|             |                      |
|-------------|----------------------|
| bef. Fläche | 19,50 m <sup>2</sup> |
| Carport     | 19,15 m <sup>2</sup> |
| Garten      | 85,63 m <sup>2</sup> |
| Vorgarten   | 8,64 m <sup>2</sup>  |
| Zufahrt     | 9,90 m <sup>2</sup>  |
| Zugang      | 17,48 m <sup>2</sup> |

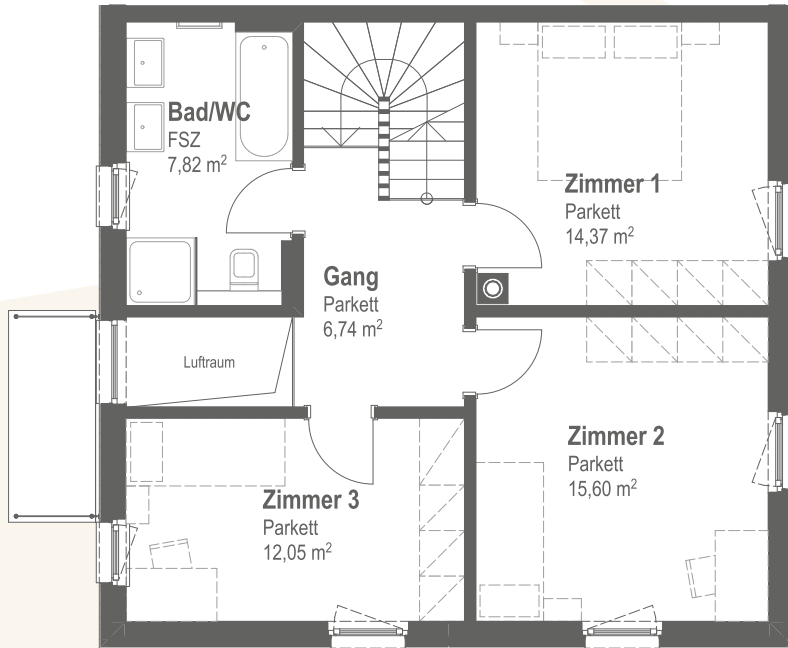
## EG

|           |                      |
|-----------|----------------------|
| AR        | 5,66 m <sup>2</sup>  |
| AR        | 3,26 m <sup>2</sup>  |
| Gard.     | 2,46 m <sup>2</sup>  |
| VR        | 6,54 m <sup>2</sup>  |
| WC        | 1,86 m <sup>2</sup>  |
| Wohnküche | 41,28 m <sup>2</sup> |

# STADTVILLA 2

Roseggerstraße 23/2 | 2500 Baden

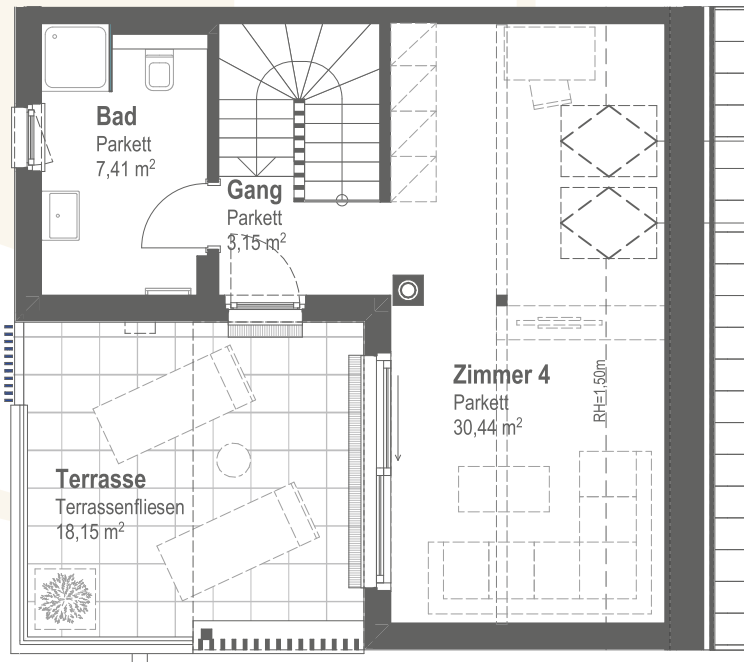
## 1. OG



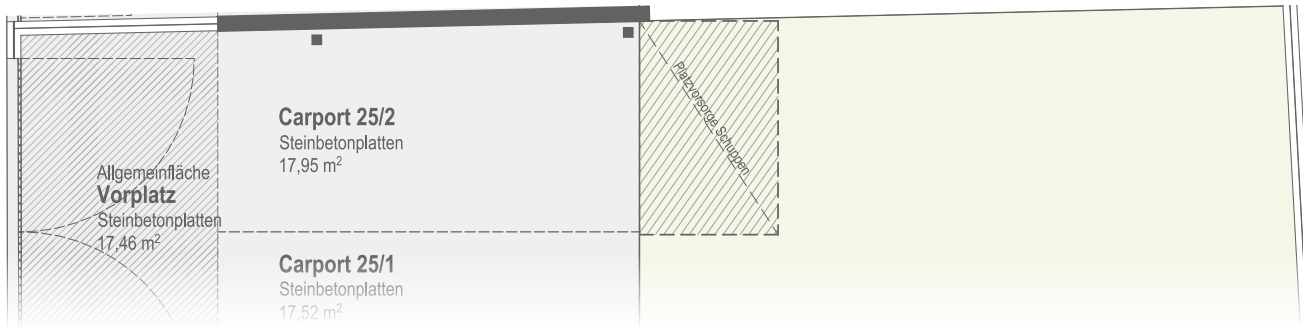
|          |                      |
|----------|----------------------|
| Bad/WC   | 7,82 m <sup>2</sup>  |
| Gang     | 6,74 m <sup>2</sup>  |
| Zimmer 1 | 14,37 m <sup>2</sup> |
| Zimmer 2 | 15,60 m <sup>2</sup> |
| Zimmer 3 | 12,05 m <sup>2</sup> |



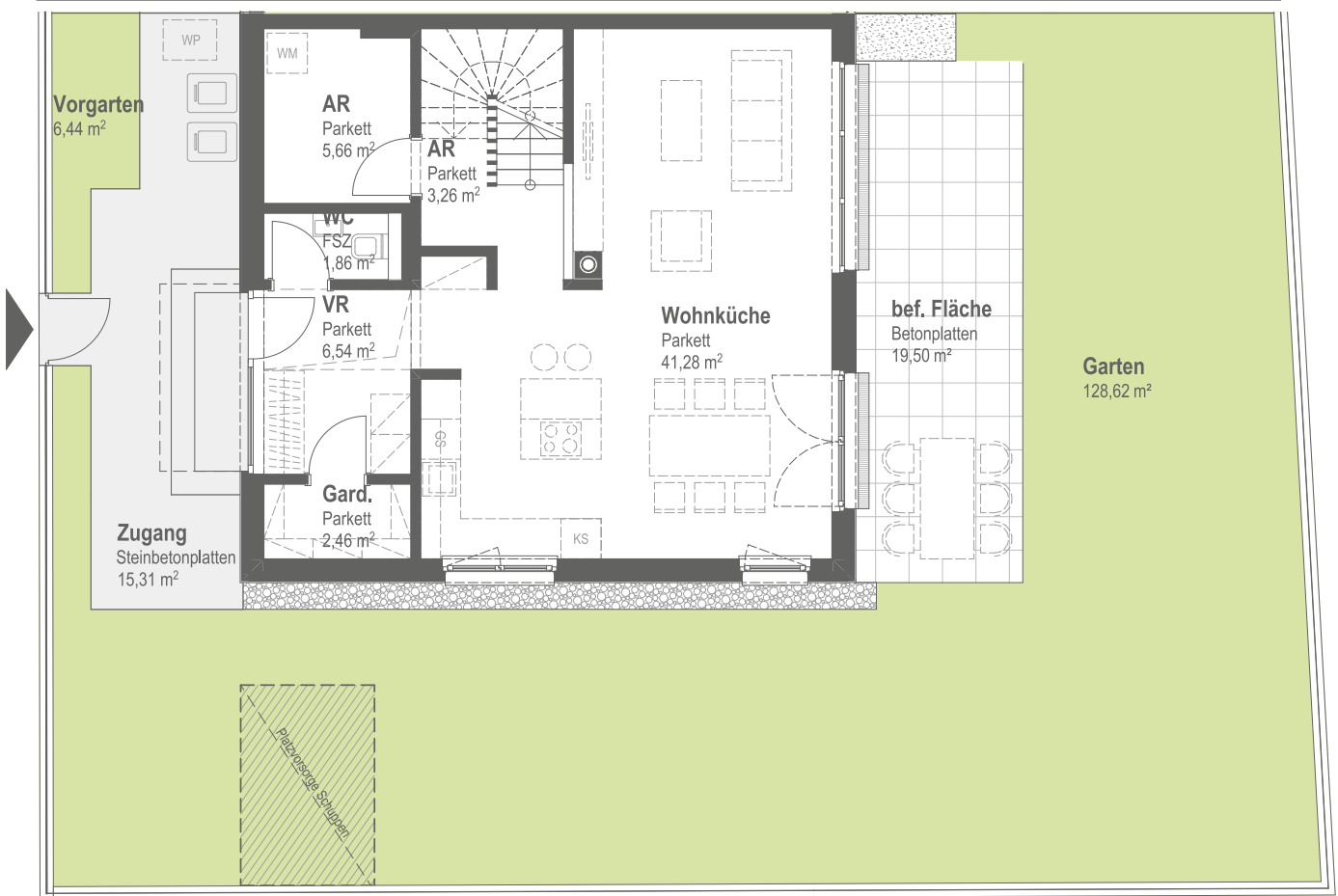
## 2. OG



|          |                      |
|----------|----------------------|
| Bad      | 7,41 m <sup>2</sup>  |
| Gang     | 3,15 m <sup>2</sup>  |
| Zimmer 4 | 30,44 m <sup>2</sup> |
| Terrasse | 18,15 m <sup>2</sup> |



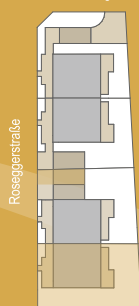
Stadvilla 3 (25/1)



## ALLGEMEINE INFORMATIONEN

### LAGE

Weichselgasse



Roseggerstraße



Zimmeranzahl 5

Wohnnutzfläche 158,63 m<sup>2</sup>  
inkl. Flächen mit Raumhöhen <1,5m

|             |                       |
|-------------|-----------------------|
| bef. Fläche | 19,50 m <sup>2</sup>  |
| Carport     | 17,95 m <sup>2</sup>  |
| Garten      | 128,62 m <sup>2</sup> |
| Vorgarten   | 6,44 m <sup>2</sup>   |
| Zugang      | 15,31 m <sup>2</sup>  |

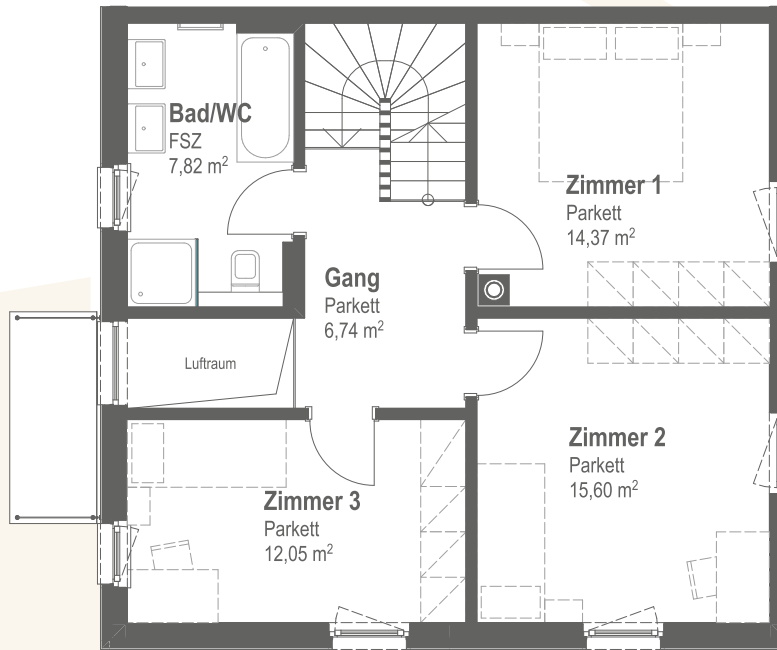
## EG

|           |                      |
|-----------|----------------------|
| AR        | 5,66 m <sup>2</sup>  |
| AR        | 3,26 m <sup>2</sup>  |
| Gard.     | 2,46 m <sup>2</sup>  |
| VR        | 6,54 m <sup>2</sup>  |
| WC        | 1,86 m <sup>2</sup>  |
| Wohnküche | 41,28 m <sup>2</sup> |

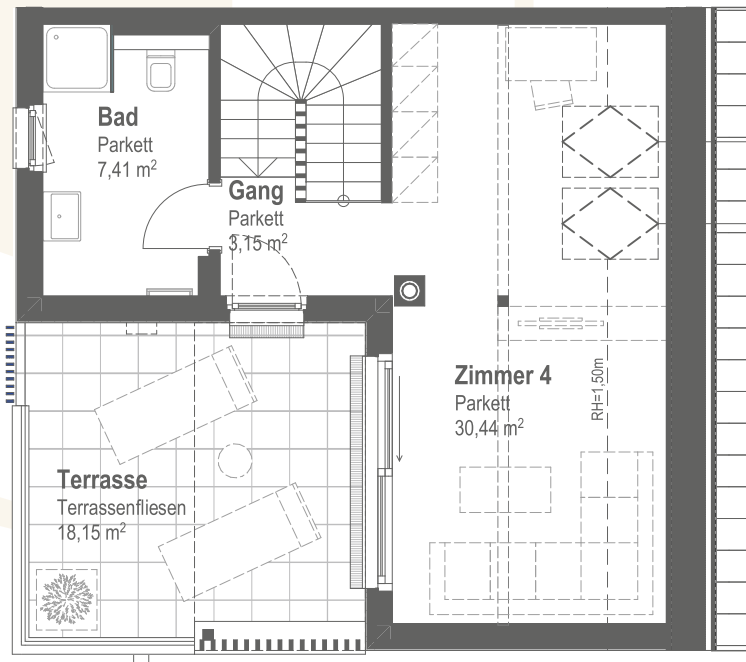
# STADTVILLA 4

Roseggerstraße 25/2 | 2500 Baden

## 1. OG



|          |                      |
|----------|----------------------|
| Bad/WC   | 7,82 m <sup>2</sup>  |
| Gang     | 6,74 m <sup>2</sup>  |
| Zimmer 1 | 14,37 m <sup>2</sup> |
| Zimmer 2 | 15,60 m <sup>2</sup> |
| Zimmer 3 | 12,05 m <sup>2</sup> |



## 2. OG

|          |                      |
|----------|----------------------|
| Bad      | 7,41 m <sup>2</sup>  |
| Gang     | 3,15 m <sup>2</sup>  |
| Zimmer 4 | 30,44 m <sup>2</sup> |
| Terrasse | 18,15 m <sup>2</sup> |